



---

CABINET FOR HEALTH  
AND FAMILY SERVICES

**Medicaid Monthly Virtual  
Meeting  
July 17, 2025**

# Agenda

- Welcome/Introduction
- Our Healthy Kentucky Home Spotlight – Substance Use Disorder (SUD) & Harm Reduction
- Kentucky Medicaid’s New Provider Directory
- 1115 Community Engagement Waiver Update
- 1915(c) Community Health for Improved Lives and Development (CHILD) Waiver
- 1915(i) RISE
- Kentucky Medicaid Diabetes – Continuous Glucose Monitoring (CGM) Grant Program
- Medicaid Renewals

# Our Healthy Kentucky Home: Substance Use Disorder (SUD) & Harm Reduction

# July: Substance Use Disorders & Harm Reduction



# Our Healthy Kentucky Home

# Our Healthy Kentucky Home

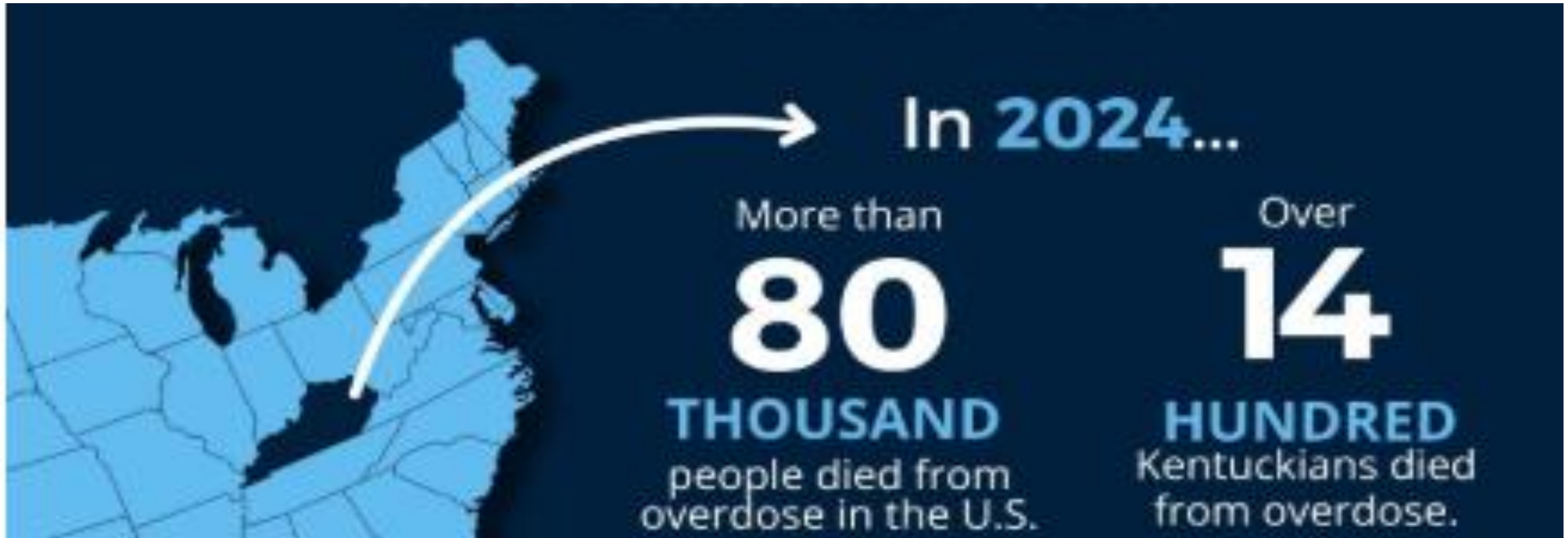
---

Substance use disorder, otherwise known as addiction, occurs when an individual compulsively misuses drugs or alcohol despite knowing the negative impact it has on their life.

Harm reduction seeks to reduce negative consequences associated with using drugs and is an important component of Kentucky's efforts to promote prevention, treatment and recovery.

The pillars of the Our Healthy Kentucky Home campaign are important for those struggling with addiction.

Adopting a healthy eating pattern, regular physical activity and building a strong sober support network is essential to the recovery journey.



According to the 2024 KY Drug Overdose Fatality report and the Center for Disease control and prevention



A photograph of two women sitting at a dark outdoor table, smiling and eating. The woman on the left has dark hair and is wearing a light blue top. The woman on the right has long, wavy brown hair and is wearing a white button-down shirt. They are both holding food. On the table are two glasses with green straws, one containing a green smoothie and the other an orange smoothie. There are also some bowls and plates of food, including what looks like bread and vegetables. The background is a blurred outdoor setting with greenery and buildings.

# NUTRITION FOR SUBSTANCE USE *RECOVERY*

A healthy eating pattern can boost brain health and mood, reducing some of the mental and physical symptoms of withdrawal, and speed up the healing process.

**TO LEARN MORE VISIT:**  
[OurHealthyKYHome.ky.gov](http://OurHealthyKYHome.ky.gov)

**HEALTHY**  
**KENTUCKY**  Home

**TEAM**  
**KENTUCKY** 



# STRONG BODY, STRONG MIND, Strong Recovery

Making physical activity a daily part of your life offers multiple benefits :

- ☒ Relieve stress
- ☒ Manage anger & frustration
- ☒ Improve sleep

**TO LEARN MORE VISIT:** [OurHealthyKYHome.ky.g](http://OurHealthyKYHome.ky.g)

Our **HEALTHY**  
**KENTUCKY** Home

TEAM  
**KENTUCKY**





A photograph of three men sitting in a circle, engaged in a conversation. The man on the left is partially visible, wearing glasses and a light blue shirt. The man in the center is older, with white hair, wearing a grey and teal striped shirt. The man on the right is younger, bald with a beard, wearing a black t-shirt. They are in a room with bookshelves in the background.

# ENGAGE WITH OTHERS FOR A HEALTHY RECOVERY

Engaging with others who understand your recovery journey is essential for substance use recovery success.

**TO LEARN MORE VISIT:**

[OurHealthyKYHome.ky.gov](http://OurHealthyKYHome.ky.gov)

Our **HEALTHY**  
**KENTUCKY** Home

TEAM  
**KENTUCKY**



# NALOXONE SAVES LIVES

Naloxone is used to reverse opioid overdose. You can learn how to save someone's life by watching a quick step-by-step video.

Our **HEALTHY**  
**KENTUCKY** Home

TEAM  
**KENTUCKY**



 Find  
Naloxone  
Now **KY**



**988** | **SUICIDE & CRISIS  
LIFELINE**

**COMPASSIONATE SUPPORT IN YOUR  
TIME OF NEED**

**Text, Call, Chat 988**

**24/7**

**TO LEARN MORE VISIT:**

**<https://988lifeline.org/get-help/>**

Our **HEALTHY**  
**KENTUCKY** Home

**TEAM**  
**KENTUCKY**



# RECOVERY IS REAL

**7 in 10** adults  
who have had a mental health  
or substance use condition  
are in recovery.

Our **HEALTHY**  
**KENTUCKY** Home

TEAM  
**KENTUCKY**





# HEALTHY HABITS

## TO IMPROVE YOUR HEALTH



**EAT**  
Healthy Foods



**EXERCISE**  
Regularly



**ENGAGE**  
With Others

**TO LEARN MORE VISIT:** [OurHealthyKYHome.ky.gov](http://OurHealthyKYHome.ky.gov)

Our **HEALTHY**  
**KENTUCKY** Home

TEAM  
**KENTUCKY**



# Helpful websites:

- OurHealthyKyHome.ky.gov
- <https://www.chfs.ky.gov/agencies/dph/Pages/harmreduction.aspx>.
- <https://findnaloxone.ky.gov/Pages/how-do-i-use-naloxone.aspx>.
- <https://988lifeline.org/get-help/>.
- [Find Help Now](#)



# Kentucky Medicaid's New Provider Directory

In this section

**Division of Program Integrity**

Fraud and Abuse

**Provider Directory**

[Home](#) > [Agencies](#) > [Department for Medicaid Services](#) > [Division of Program Integrity](#) > [Provider Directory](#)

## Provider Directory

Welcome to the Kentucky Medicaid Provider Directory! This is a helpful tool to find doctors, clinics, and other healthcare services in your area. It is a simple way to find the care you need and learn more about your options.

Two directories are available. One directory is specifically for Waiver Providers. The other directory includes all Medicaid Providers.

Please check this site regularly as more information becomes available.

### Waiver Directory

Use the link below to find Waiver Service Providers in your area. Your search will include information such as waiver services, specialties, locations and phone numbers.

[Waiver Directory](#)

### Provider Directory

Use the link below to find Medicaid Providers in your area. You can search by zip code, type of doctor, and preferred language.

[Medicaid Provider Directory](#)

Provider Directory Link:

<https://www.chfs.ky.gov/agencies/dms/dpi/Pages/Provider-Directory.aspx>



## Search Providers



\* = Required

Welcome to the **Kentucky Medicaid Waiver** Provider Directory

You can use this directory to search for waiver providers enrolled in Kentucky Medicaid. Your search will include information such as waiver services, specialties, locations, and phone numbers.

If you need more information please contact:

- **HCB waiver:** [HCBIquiries@ky.gov](mailto:HCBIquiries@ky.gov)
- **MP/SCL waiver:** [DDID.Info@ky.gov](mailto:DDID.Info@ky.gov)
- **ABI/Model II waiver:** [1915cwaiverhelpdesk@ky.gov](mailto:1915cwaiverhelpdesk@ky.gov)

**Waiver Program Name:**

Select One

**Looking For A Waiver Service:**

Specialty:

Provider Name

Provider NPI

XXXXXXXXXX

Provider Taxonomy

Provider County

Select One

Provider City

Provider Zip

XXXXX

Clear

Search

## Kentucky Medicaid Waiver Provider Directory

Waiver Program Name:

Home and Community Based Waiver

Looking For A Waiver Service:

Select One

Specialty:

Select One

Provider Name

Provider NPI

Provider Taxonomy

Provider County

Provider City

Provider Zip

Hardin

xxxxxx

Clear

Search

Organization / Agency	Provider Name	Provider Address	County	Phone Number	NPI	Taxonomy	Specialty	Other PhysicalAddress
Active Day 2	ACTIVE DAY OF ELIZABETHTO WN	1238 Woodland Dr , Elizabethtown, Kentucky, 42701- 2767	Hardin	(270) 763-9192	1578602819	261QA0600X	Adult Day Care	
LINCOLN TRAIL AREA AGENCY ON AGING	LINCOLN TRAIL AREA AGENCY ON AGING	750 S Provident Way , Elizabethtown, Kentucky, 42701- 5956	Hardin	(270) 737-6082	1295880441	251X00000X	Adult Day Care	

[First](#) [Previous](#) [Next](#) [Last](#)

(Page 1 of 1)

Page: 1



CABINET FOR HEALTH  
AND FAMILY SERVICES



Refresh

Change Your Zip Code

40291

Choose a Provider Type

Primary Care

Specialty

(All)

Telehealth

(All)

Accepting New Medicaid Patients

Yes

Accepting New KCHIP Patients

(All)

Language Services Offered by Provider

(All)

Accommodation

Transfer Staff/Patient Lifts

Search Provider Name

(All)

Select Max Distance (Miles)

10.0



15.1

Provider Name

Provider Type

Address

ACHENJANG JOYCE

PHYSICIAN  
INDIVIDUAL

200 E Chestnut St, Louisville, KY,  
40202, USA

[Click for More Info](#)

ADKINS SONDR

ADVANCED  
PRACTICE  
REGISTERED  
NURSE (APRN)

4950 Norton Healthcare Blvd, Ste  
305, Louisville, KY, 40241, USA

[Click for More Info](#)

ALLISON STEPHANIE

ADVANCED  
PRACTICE  
REGISTERED  
NURSE (APRN)

315 E Broadway, Louisville, KY,  
40202, USA

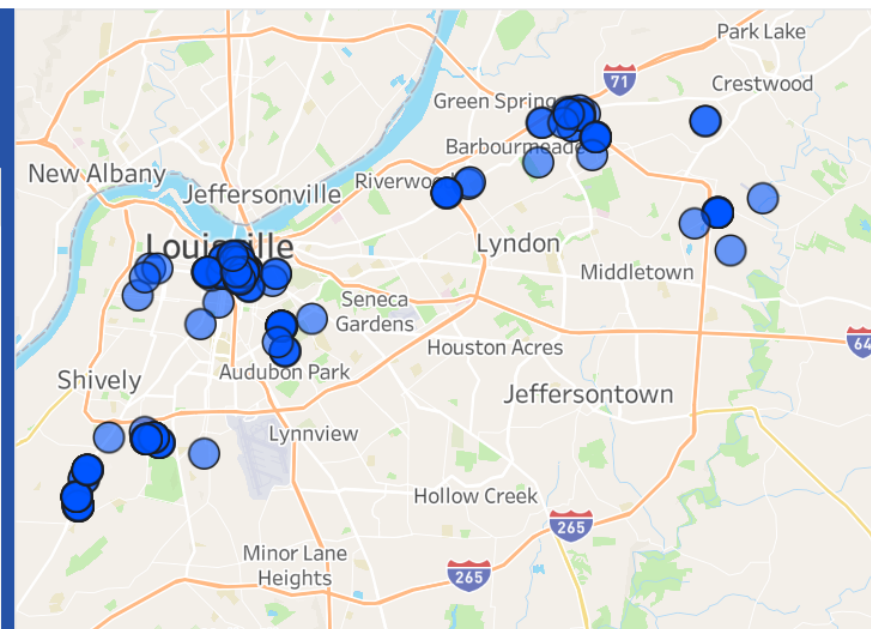
[Click for More Info](#)

BAKER ERIC

PHYSICIAN

200 E Chestnut St, Louisville, KY,

[Click for More Info](#)



CABINET FOR HEALTH  
AND FAMILY SERVICES

◀ Previous

## ADKINS SONDRA

**Provider Type:** Primary Care

**Speciality:**

NURSE PRACTITIONER (OTHER)

**Address:** 4950 Norton Healthcare Blvd, Ste 305, Louisville, KY, 40241, USA

**Main Phone:**  
(502)-394-6460

**Website:**  
<https://leespecialtyclinic.com/>

**Telehealth:**  
No

**Number of Medicaid Members Seen in Last  
365 Days**

276

**Percent of Members by Age**

% by Age 20 or Younger

3.6%

% by Age 21 or Older

97.5%

**Click Dot for Directions in Google Maps**



**Language Services Offered**

Not Provided

**Cultural Capabilities**

Yes

**List of Accommodations**

Accessible Examination Table and Chairs  
Accessible Building  
Accessible Medical Equipment  
Accessible Parking  
Accessible Restroom  
Transfer Staff/Patient Lifts



# Provider Directory Edits.....coming soon!

- The ability to search by NPI and Taxonomy
- The ability to search by County
- Minor visual changes to the landing page and provider detail pages

# 1115 Community Engagement Waiver Update

# Overview of the Community Engagement Program

---

- Kentucky House Bill 695 (2025) established requirements for CHFS to implement a Community Engagement Program.
- CHFS has submitted an 1115 Demonstration proposal to CMS to automatically refer eligible Medicaid members to the Department of Workforce Development (DWD).
- Eligible members are non-exempt Medicaid expansion adults who:
  - Have been enrolled more than 12 months.
  - Are ages 19–60.
  - Are physically and mentally able to work (as defined by CHFS).
- DWD will contact members to offer job coaching, skills training, and employment support.

# Member Exemptions

CHFS will exempt Medicaid expansion eligibility group members who meet at least one of the following conditions from automatic referral to DWD :

- |   |   |
|---|---|
| <ul style="list-style-type: none"><li>• Individuals under 19 or over 60 years of age.</li><li>• Individuals responsible for care of a dependent child under age 18 or a dependent disabled adult relative.</li><li>• Individuals with:<ul style="list-style-type: none"><li>- A diagnosed substance use disorder or serious mental illness.</li><li>- A chronic disease as determined by CHFS.</li><li>- An acute medical condition (physical and/or behavioral) that would prevent them from complying with requirements.</li></ul></li><li>• Individuals whose eligibility has been determined based on disability or who have been deemed disabled by the Social Security Administration.</li><li>• Individuals with verified earned income.</li></ul> | <ul style="list-style-type: none"><li>• Individuals receiving Unemployment Insurance income benefits.</li><li>• Pregnant women.</li><li>• Individuals who are homeless or who were recently homeless for up to six months post-housing.</li><li>• Individuals who are victims of domestic violence.</li><li>• Individuals who have recently been directly impacted by a catastrophic event such as a natural disaster or the death of a family member living in the same household.</li><li>• Individuals already participating in a workforce participation program that CHFS has determined meets the objective of the Community Engagement Waiver Program (e.g., SNAP).</li><li>• Former foster youth up to age 26.</li><li>• Other good cause exceptions as approved by CHFS.</li></ul> |
|---|---|



## Next Steps: Federal Public Notice and Comment Process

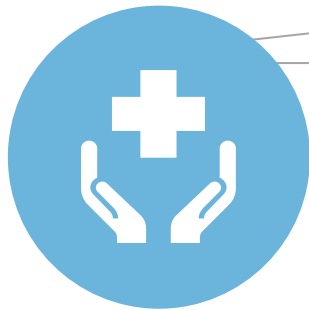
---

- DMS successfully submitted the Community Engagement waiver to CMS on June 25.
- CMS notified DMS on July 7, 2025 that the application is complete.
- CMS posted the Demonstration on Medicaid.gov for a 30-day federal public comment period from July 10, 2025 to August 9, 2025.

# 1915(c) Community Health for Improved Lives and Development (CHILD) Waiver

# Families First

A comprehensive, multi-year initiative aimed at enhancing the existing system of care for all Kentucky children and youth.



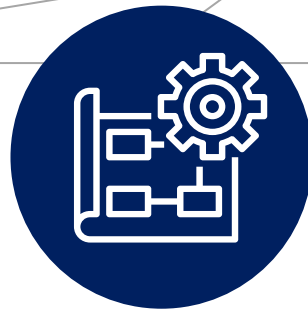
## **SHINE KY**

Enhancing access to and delivery of school-based services for Medicaid and CHIP-eligible and enrolled students.



## **KY CARES**

Services to support community reentry and improve care transitions for justice-involved youth.



## **CHI Mapping Tool**

Tracking and reporting of children's health initiatives.



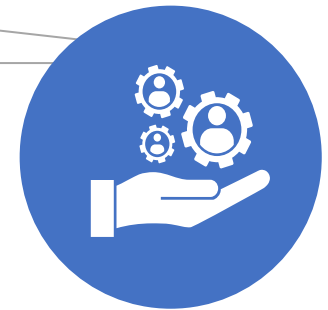
## **Funding Modernization**

Restructuring of Medicaid payment for medically necessary treatment services.



## **High Needs Service Delivery**

The 1915c CHILD Waiver is designed to meet the child-centric care, support services, housing, custody and placement, and other health-related social needs.



## **Children's State Plan Amendment**

Plan for a SPA to locate appropriate resources and housing for children and youth in need of placement and services.

**Families First seeks to create a unified, integrated, and child-centered care framework that addresses the diverse needs of Kentucky's young population. By enhancing coordination across health, education, social services, and other key sectors, Families First aims to ensure that every child and youth receives the necessary support to achieve their full potential.**

# What is the 1915(c) CHILD Waiver?

## **Community Health for Improved Lives and Development (CHILD)**

**Anticipated January 2026**

The CHILD Waiver is a new Kentucky Medicaid program designed to help Kentucky children and youth with significant behavioral health or developmental challenges get the services they need, while staying at home, in school, and in their communities.

# Current Status with the 1915(c) CHILD Waiver

---

## DMS Waiver Application

- Waiver application developed and currently available for review and public comment at: <https://bit.ly/KYMedicaidLTSSInfo>
  - Access for feedback was available through July 15, 2025 at 11:59 pm ET
- DMS targets August 2025 for submission to the Centers for Medicare and Medicaid (CMS) for approval



# 1915(c) CHILD Waiver

---

## Key Features

- A fixed number of enrollment slots
- A standardized needs-based assessment to determine functional eligibility
- Medicaid-funded services not available through the standard benefit package
- Individualized service plans and care coordination

# Who the 1915(c) CHILD Waiver Helps?

---

## Children and Youth

- Under age 21
- With significant behavioral health or developmental needs
- Kentucky children and youth who:
  - Need a level of care similar to what would be provided in a psychiatric residential treatment facility, ICF/IID, or hospital
  - Can be safely supported at home or in the community with the right services

# What Services Are Covered?

---

## **The 1915(c) CHILD Waiver Services**

- Case Management
- Respite
- Community Living Supports
- Environmental and Minor Home Modifications
- Clinical Therapeutic Services
- Supervised Residential Care

All services will be person-centered and delivered by trained, waiver-certified providers.

# Where can I learn more?

---

**Additional information will be made available over the next few weeks.**

For more information, please visit any of the following:

- [1915cWaiverHelpDesk@ky.gov](mailto:1915cWaiverHelpDesk@ky.gov)
- Calling (844) 784-5614
- [CHILDWaiverSummary.pdf](#)

# Participant Directed Services (PDS) Background Checks

# Background

---

**May 2023**

While preparing for upcoming waiver renewals, CMS identified a compliance issue with KY's 1915(c) waivers that offer participant directed services.

## **The Issue**

Requiring PDS participants to pay for the cost of obtaining criminal background checks could disincentivize self-direction if these individuals cannot be hired without these verifications. When such checks are mandated under state law, the costs of conducting these checks should not be deducted from the participant-directed budget unless the cost is incorporated into the budget.

## **Solution**

Add these costs to the FMS (Financial Management Service) as long as they have that identified as one of their responsibilities.



# Implementation

---

- Financial Management Agencies (FMA's) received rate increases in 2022 and 2023
- Rate increases were made permanent in 2025
- Rates were intended to include the cost of background checks for PDS employees

## Key Dates

- April 8, 2025: Communication/correspondence presented to the PDS Working Group
- May 2, 2025: Meetings with CMHC's and ADD's to present the new policy
- June 27, 2025: Letters mailed to PDS Participants
- July 1, 2025: Policy in effect



Andy Beshear  
GOVERNOR

## CABINET FOR HEALTH AND FAMILY SERVICES

### DEPARTMENT FOR MEDICAID SERVICES

Division of Long-Term Services and Supports  
275 East Main Street, 6W-B  
Frankfort, Kentucky 40621  
chfs.ky.gov

Eric Friedlander  
SECRETARY

Lisa Lee  
COMMISSIONER

**To:** 1915(c) Home and Community Based Services Waiver  
Participant Directed Service Participants

**From:** Lisa Lee, Commissioner *Lisa A. Lee*  
Department for Medicaid Services  
Victoria Elridge, Commissioner *Victoria Elridge*  
Department for Aging and Independent Living

**Date:** June 18, 2025

**RE:** Cost for Criminal Background Checks for Participant-Directed  
Services (PDS) Employees

We want to tell you about a change to background checks for Participant Directed Services employees. A background check is a review of a person's criminal history and other records to make sure they are qualified to work as a caregiver. We require a pre-employment background check for Participant Directed Services employees to reduce risks to your safety and well-being and ensure you are receiving the highest quality of services.

In the past, you as the participant/employer had to pay for your Participant Directed Services employee background checks. Starting on July 1, 2025, pre-employment criminal background checks completed for new PDS employees, or background checks re-run on current PDS employees will follow a new policy. This new policy only applies to criminal background check costs, and *does not impact* other requirements, such as drug screenings, First Aid/CPR, etc.

@kentuckyDMS @kentuckymedicaid  
@kyMedicaidServices <https://bit.ly/DMSvideo>

TEAM  
KENTUCKY

An Equal Opportunity Employer M/F/D

Here's how the new policy works:

- Your financial management agency will pay for up to four (4) background checks per plan of care year.
- After the first four (4), you will have to pay for background checks until your next plan of care year begins.

Your financial management agency is the agency that processes your Participant Directed Services employee's paycheck and employment paperwork and is also responsible for maintaining records of employee criminal background checks.

If you have questions about this change, you can talk to your case manager or contact the Department for Aging and Independent Living. The Department for Aging and Independent Living helps us operate Participant Directed Services for the waiver programs. You can call the Department for Aging and Independent Living at (877) 315-0589 or email [HCBInquiries@ky.gov](mailto:HCBInquiries@ky.gov).

@kentuckyDMS @kentuckymedicaid  
@kyMedicaidServices <https://bit.ly/DMSvideo>

TEAM  
KENTUCKY

An Equal Opportunity Employer M/F/D

TEAM  
KENTUCKY

CABINET FOR HEALTH  
AND FAMILY SERVICES

# 1915(i) RISE

# The 1915(i) RISE Initiative:



- A new Medicaid benefit under Kentucky's 1915(i) State Plan Amendment
- Designed for adults (18+) with Serious Mental Illness (SMI), with or without a co-occurring Substance Use Disorder (SUD)
- Brings 10 essential Home and Community-Based Support (HCBS) services into communities
- Provider Enrollment opened July 1, 2025; Participant Enrollment opens September 2025



# 1915(i) RISE Initiative Developments and Contact Information:



**Are you a provider interested in learning more about the 1915(i) RISE INITIATIVE?**

**Provider Webinar**  
**Tuesday, July 22, 1 p.m.-2:30 p.m.**

*The 1915(i) RISE Initiative helps adults with serious mental illness live independently. Behavioral health, housing, education and employment providers can apply to deliver 1 or more of 10 services. Providers are invited to learn more on 7/22.*

[Click to Register HERE!](#)

Kentucky Medicaid has launched the **1915(i) RISE Initiative — Recovery. Independence. Support. Engagement.** This new program helps **adults with serious mental illness live independently with Medicaid-funded supports** like case management, housing, supported employment, in-home care, and more.

**TEAM KENTUCKY**  
CABINET FOR HEALTH AND FAMILY SERVICES

- 50+ providers have begun the Certification Application process
- Staff are in place as of 7/1
- Provider webinar scheduled 7/22, 1-2:30pm ET
- General inquiries:  
[1915iRISEInitiative@ky.gov](mailto:1915iRISEInitiative@ky.gov)
- Provider inquiries:  
[1915iRISEProvider@ky.gov](mailto:1915iRISEProvider@ky.gov)

Kentucky Medicaid Diabetes:  
Continuous Glucose  
Monitoring (CGM)  
Grant Program

# Continuous Glucose Monitor Grant

**Overview:** The Continuous Glucose Monitoring (CGM) Project started in October of 2023 and will end phase 1 in September 2025. This grant was made possible through the Center for Health Care Strategies and the Helmsley Trust.

- The project is focused on improving diabetes care and awareness within the Medicaid population. Expand access and increase utilization of CGMs, Support proper CGM usage to manage healthy A1c levels, and improve diabetes outcomes.
- The project involves close collaboration across multiple departments, divisions, and external partners to ensure successful implementation and impact.
- CGMs remove the need for Diabetics to perform finger sticks to monitor their blood sugar level. Sensors provide electronic data to assist with managing the high and lows of a persons blood sugar levels.

# CGM Policy Change 6/2024

## Updated Summary for Preferred CGMs:

The patient has one of the following diagnoses:

- Insulin-dependent Diabetes Mellitus Type 1 (ICD-10 group E10); **OR**
- Insulin-dependent Diabetes Mellitus Type 2 (ICD-10 group E11); **OR**
- Gestational Diabetes Mellitus (ICD-10 group O24); **OR**
- Has a history of problematic hypoglycemia defined as:
  - Recurrent level 2 hypoglycemic events (glucose < 54 mg/dL) that persist despite multiple (2 or more) attempts to adjust medication(s) and/or modify the diabetes treatment plan; **OR**
  - A history of one level 3 hypoglycemic event (glucose < 54 mg/dL) characterized by altered mental and/or physical status requiring third-party assistance with for treatment of hypoglycemia.

- For full supply list and criteria, visit: [kyportal.medimpact.com](https://kyportal.medimpact.com)
- Managed Care Organizations may cover CGMs through their Durable Medical Equipment Policy



In this section

Division of Quality and  
Population Health

Quality Branch

Population Health Branch

Equity and Determinants of  
Health Branch

Research and Analytics  
Branch

Medicaid Diabetes

Medicaid Diabetes Member  
Information

[Home](#) > [Agencies](#) > [Department for Medicaid Services](#) > [Division of Quality and Population Health](#) > Medicaid Diabetes Member Information

## Medicaid Diabetes Member Information

Diabetes Dx 101

[Kentucky Diabetes Network \(KDN\)](#)

[Department for Public Health \(DPH\) Kentucky Diabetes Prevention and Control  
Program \(KDPCP\)](#)

[American Diabetes Association \(ADA\)](#)

In this section

Division of Quality and  
Population Health

Quality Branch

Population Health Branch

Equity and Determinants of  
Health Branch

Research and Analytics  
Branch

Medicaid Diabetes

Medicaid Diabetes Member  
Information

[Home](#) > [Agencies](#) > [Department for Medicaid Services](#) > [Division of Quality and Population Health](#) > Medicaid Diabetes Provider Information

## Medicaid Diabetes Provider Information

Diabetes in Kentucky

[Kentucky Department for Public Health \(DPH\) Diabetes 2025 Report](#)

[Kentucky Diabetes Network](#)

# Medicaid Member/Provider Resource Web Pages

- Members: [Medicaid Diabetes Member Information - Cabinet for Health and Family Services](#)
- Providers: [Medicaid Diabetes Provider Information - Cabinet for Health and Family Services](#)

**Subject:** Check Your Blood Sugar with Ease – No More Fingersticks!  
**Preheader:** CGM can make managing diabetes easier. Learn how!

Discover an Easier Way to Manage Diabetes with CGM



Managing diabetes can be tough, but there's an easier way. In 2025, about **482,000 adults and over 3,000 kids in Kentucky have diabetes**. For many people, including those with Type 2 diabetes, Continuous Glucose Monitors (CGMs) are a helpful tool. They make it easier to control blood sugar, lower health risks, and cut down on medical costs. If you or someone you love has diabetes, a CGM could make daily life easier.

**A CGM is a small device that checks your blood sugar all day and night.** It gives you real-time updates without the pain of routine finger pricks. It can also warn you if your blood sugar is getting too high or too low, helping you stay safe and make good choices for your health.

#### Why Use a CGM?

- **No more routine finger pricks** – No more painful tests throughout the day.
- **Better blood sugar control** – A CGM helps prevent highs and lows by showing your levels in real time. Studies show that people with Type 1 and Type 2 diabetes who use a CGM have better blood sugar control and lower A1C levels. [\[ADA\]](#)
- **More freedom** – Whether you're sleeping, working, or exercising, a CGM keeps you informed.
- **Better care from your doctor** – Your doctor gets detailed blood sugar data to create a plan that's right for you.

Many Medicaid members **may qualify for a CGM at no cost!**

# CGM Utilization and Education Campaign for Members and Providers

## Campaign #1-Messaging campaign highlights

- Manage diabetes easily with a CGM, no more daily finger pricks.
- Get real-time blood sugar updates to help avoid highs and lows.
- Medicaid may cover CGMs at no cost for eligible members

**Subject:** Improve Diabetes Care with CGM – A Smarter Approach for Your Patients

**Preheader:** Help your patients achieve better glucose control with real-time monitoring.

### Help Your Patients Access Medicaid-Covered CGM



Managing diabetes isn't easy for many patients, but Continuous Glucose Monitoring (CGM) can help. Studies show that CGM improves glycemic control by increasing time in range and reducing time below range, time above range, and glucose variability in both type 1 and type 2 diabetes. Additionally, CGM has been shown to improve long-term health outcomes by reducing the risk of complications. ([diabetes journal](#)).

#### Why recommend CGM?

- **Improves patient adherence** – Real-time glucose tracking leads to better decision-making.
- **Reduces severe highs and lows** – Early alerts help prevent emergencies.
- **Simplifies treatment** – Data trends allow for more personalized care and opportunity to make changes sooner rather than waiting for the next A1C reading.

#### How to Prescribe CGM & Support Your Patients

- **Who qualifies?** Medicaid patients in Kentucky with Type 1 diabetes, Type 2, gestational diabetes, and hypoglycemia (Types 2 and 3) may be eligible for CGM coverage.
- **How to prescribe?** Follow simple Medicaid guidelines to help patients obtain CGM with minimal barriers.
- **Ensure success:** Provide education and resources to help patients understand CGM use and maximize its benefits.
- **Get support:** Access these eligibility requirements and step-by-step guidance to assist your patients in securing coverage.

#### Education

- Public Health Department Diabetes Management Program or Medicaid Managed Care organization programs

#### Referral

- Diabetes Education, License Diabetes Educator, or endocrinologist

# CGM Utilization and Education Campaign for Providers

## Campaign #2- Messaging Campaign highlights

- Providers can support Better Diabetes Care with CGM
- Improves control: Real-time tracking reduces glucose highs/lows and improves outcomes
- Covered by Medicaid: Eligible for Type 1, Type 2, gestational diabetes, and hypoglycemia (Level 2 & 3)
- Easy to prescribe: Follow simple steps, educate patients, and refer to diabetes support programs

# Renewals



# Medicaid PHE Flexibilities – Ended June 2025

DMS had multiple ongoing flexibilities in place to support members going through renewals. These flexibilities ended June 30, 2025.

**01** Continuous child coverage for 12 months for all children under age 19

**02** One-month extensions to allow additional time all non-LTC and non-waiver members to respond to a notices

**03** Up to three-month extension for LTC and waiver members to allow additional time to respond to notices

**04** Allow an authorized representative signing an application or renewal form via the telephone **without a signed designation**

**But messaging to members remains the same!**

If someone does not respond by their renewal due date, they will be terminated. As soon as members find out they were terminated because they didn't respond, they should call DCBS or a Kynector for help! If they get the requested information in and are determined eligible within 90 days, they can get reinstated.

# Messaging to Members



**Update any changes to your information** (mailing address, phone number, or email) at [kynect.ky.gov/benefits](https://kynect.ky.gov/benefits)



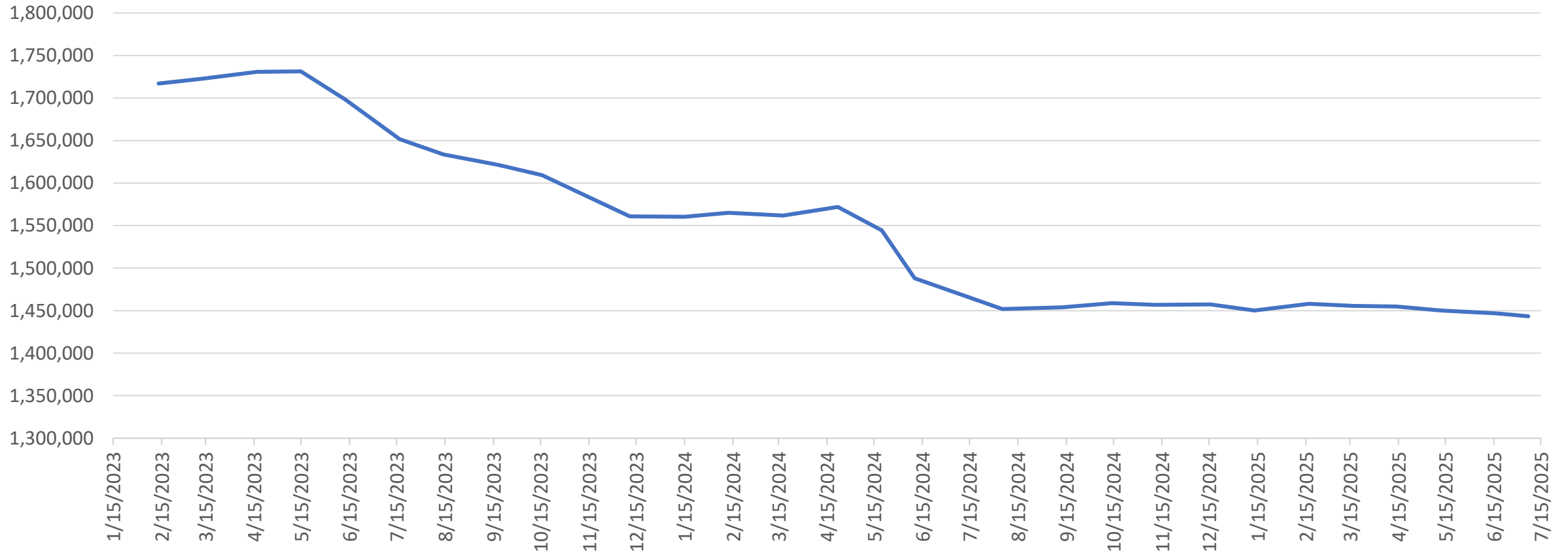
Respond to any letters you receive about Medicaid. You might hear from Medicaid through text, email, or letter. **Be sure to respond!**



You can get help anytime!  
Contact a local health coverage navigator at [kynect.ky.gov](https://kynect.ky.gov) or call **855-4kynect (855-459-6328)**

# Medicaid Enrollment Trend

Medicaid Enrollment: Jan 2023 through July 2025 Renewals



# Medicaid Renewals

- Regular annual renewals for cases unrelated to the Public Health Emergency (PHE) unwinding resumed in April 2024.
- Member Toolkit available [online](#) to support members in understanding their coverage.
- Communications materials to support members and families with children going through renewal available [online](#)!
- CMS monthly and updated reporting ongoing.

# Unwinding Report Updates Posted – Cont'd

Original CMS Monthly Reports

	Individual Renewals	Medicaid Approvals	Medicaid Terminations	Pending
Feb-24	93,004	64,789	10,128	1
Mar-24	97,962	70,358	7,932	72
Apr-24	103,265	70,170	15,887	226
May-24	94,705	51,534	37,461	816
Jun-24	58,959	41,336	13,187	1
Jul-24	40,719	36,036	1,187	0
Aug-24	36,136	31,823	979	2
Sep-24	52,369	45,833	1,234	1
Oct-24	61,174	52,815	1,557	4
Nov-24	38,540	30,194	1,334	5
Dec-24	38,604	33,235	819	1
Jan-25	70,736	61,288	1,945	1
Feb-25	67,936	59,672	1,703	3
Mar-25	76,683	67,120	1,708	0

90-Day  
Processing Period

Updated CMS Monthly Reports\*

	Individual Renewals	Medicaid Approvals	Medicaid Terminations	Pending
Feb-24	93,004	64,780	10,128	0
Mar-24	97,962	70,404	7,958	0
Apr-24	103,265	70,266	16,017	0
May-24	94,705	51,938	37,873	0
Jun-24	58,959	41,337	13,187	0
Jul-24	40,719	36,036	1,187	0
Aug-24	36,136	31,825	979	0
Sep-24	52,369	45,833	1,235	0
Oct-24	61,174	52,817	1,558	1
Nov-24	38,540	30,199	1,334	0
Dec-24	38,604	33,236	819	0
Jan-25	70,736	61,289	1,945	0
Feb-25	67,936	59,674	1,704	0
Mar-25	76,683	67,120	1,708	0

<b>1 processed</b>
<b>72 processed</b>
<b>226 processed</b>
<b>816 processed</b>
<b>1 processed</b>
<b>0 processed</b>
<b>2 processed</b>
<b>1 processed</b>
<b>3 processed</b>
<b>5 processed</b>
<b>1 processed</b>
<b>1 processed</b>
<b>3 processed</b>
<b>0 processed</b>

\*Per CMS' Medicaid and Children's Health Insurance Program Eligibility and Enrollment Data Specifications for Reporting During Unwinding, Updated October 2023, Version 3.



# KY Medicaid Renewals\* and Reinstatements

Individuals procedurally terminated on their renewal due date are given 90 days to respond and provide requested information. If they are determined eligible, coverage is **reinstated** back to their termination date. Months that are still within the 90-day window and are still processing reinstatements are included below.

	Individual Renewals	Medicaid Approvals	Medicaid Terminations	Pending	Extended	Reinstatements as of 06/23/25
April	75,162	64,401	1,798	0	8,763	1,105
May	54,344	46,409	1,379	0	6,556	808
June	43,078	37,640	914	1	4,523	68

\*Numbers are based on CMS Reports.

# Help us get the message out! Communications materials available to support members!

## How to Apply

## Materials for Offices

## Get help from kynectors

## Renewals

### HOW DO I APPLY FOR MEDICAID?



Medicaid offers no-cost health coverage for Kentuckians, **including** pregnant women and children.

Connect with us today!



Visit [kynect.ky.gov/benefits](https://kynect.ky.gov/benefits)



Call (855) 306-8959



Visit your local social services office:  
[kynect.ky.gov/benefits/s/find-dcbs-office](https://kynect.ky.gov/benefits/s/find-dcbs-office)



Are you or your family covered by Medicaid or KCHIP? Your renewal letter could be coming soon!

- Make sure your address is up to date in kynect!
- Check your mail. We may need to contact you!
- Complete and return requests for information.
- No longer qualify? Shop kynect for an affordable plan!



### QUESTIONS ABOUT MEDICAID? kynectors CAN HELP!

kynectors can answer questions about Medicaid and talk to you about your coverage options.

Scan the QR code below or visit [kynect.ky.gov](https://kynect.ky.gov) to get started today!



Follow us on:



### MEDICAID MEMBER? GET READY TO RENEW!

If you hear from us, please respond! Stay in touch. Stay covered.



**Every 12 months** Medicaid members will go through a renewal process to make sure they are still eligible for coverage.



Update any changes to your information (mailing address, phone number, or email) at [kynect.ky.gov/benefit](https://kynect.ky.gov/benefit).



Respond to any letters you receive about Medicaid. You might hear from us via text, email, or letter. Be sure to respond!



If you need additional help, you can contact a local health coverage navigator at [kynect.ky.gov/benefits](https://kynect.ky.gov/benefits).



# Spread the word about Renewals for **Children** too! Materials are available to help families stay in the know!

Renewing Child  
Coverage

Health Coverage  
Options

Get help from  
kynectors

Use kynect

### Renewing Your Child's Health Coverage

Renewing your child's Medicaid or KCHIP is easy and essential. Make sure to follow these steps:

- 1 Update important information in kynect. If anything (address, phone number, email, or income) changes, visit [kynect.ky.gov](http://kynect.ky.gov) or call 855-459-6328.
- 2 If you hear from us, please respond! You will be notified about Medicaid or KCHIP coverage during the annual renewal period via letter, phone call, and/or text message. The letter will tell you whether you need to complete a form or provide information to keep your coverage active. Please return any forms as promptly as possible.
- 3 Get help any time! Kentucky has many resources available to help you and your family navigate the Medicaid or KCHIP enrollment and renewal process:

- a. Online: [kynect.ky.gov](http://kynect.ky.gov)
- b. By phone: 855-4kynect (855-459-6328)
- c. Local kynectors: [kynect.ky.gov](http://kynect.ky.gov), "Get Local Help"



Follow us: 

### No longer eligible for Medicaid or KCHIP?

**kynect has options.**

There are other options available if a child is no longer eligible for Medicaid or Kentucky Children's Health Insurance Program (KCHIP). Go to [kynect.ky.gov/benefits](http://kynect.ky.gov/benefits) to learn about what is available for your family!

For any questions, or if you need assistance with understanding your options, you can reach out to a kynector at any time at no cost. To speak with a kynector, call 855-459-6238.



Follow us on: 

### DOES YOUR CHILD NEED HEALTH INSURANCE?

?

Kentucky has many resources available to help you or your family navigate the enrollment and renewal process for Medicaid or KCHIP coverage:

- Online: [kynect.ky.gov](http://kynect.ky.gov)
- By phone: 855-4kynect (855-459-6328)
- Local kynectors or offices: [kynect.ky.gov](http://kynect.ky.gov), "Get Local Help"



Follow us: 

### DOES YOUR CHILD NEED HEALTH COVERAGE?

**Let's kynect!**

Explore health coverage options for children, including Medicaid and the Kentucky Children's Health Insurance Program (KCHIP), online.

Scan the QR code, visit [kynect.ky.gov/benefits](http://kynect.ky.gov/benefits), or call 855-459-6238



Follow us: 

# Medicaid Member Toolkit Available on the DMS Member Website!

Available here

<https://www.chfs.ky.gov/agencies/dms/member/Pages/default.aspx>



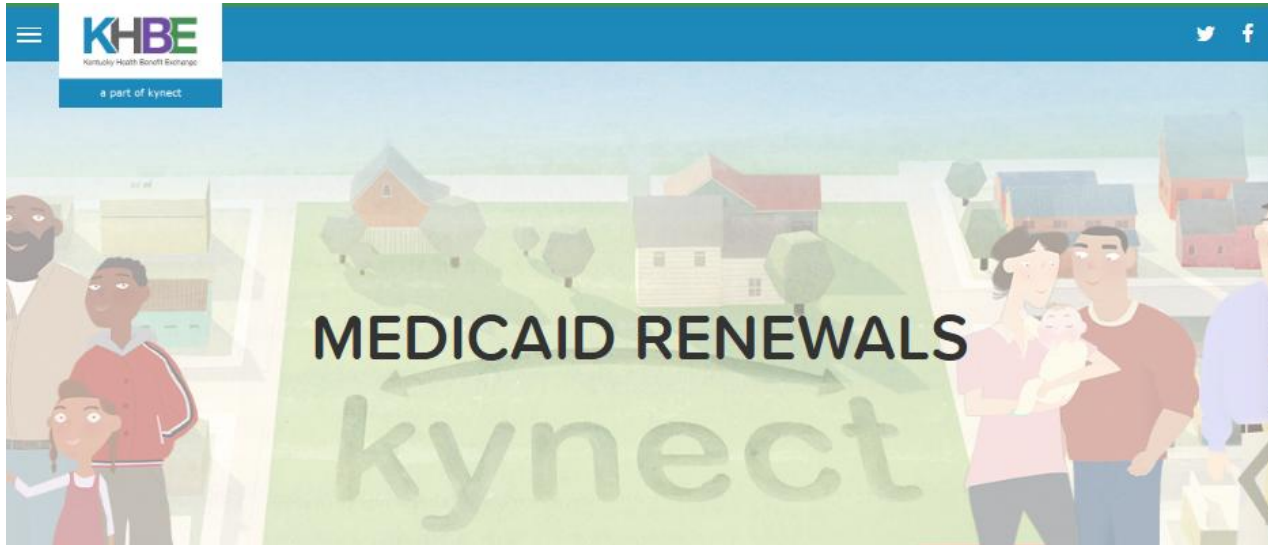
TEAM  
KENTUCKY  
CABINET FOR HEALTH  
AND FAMILY SERVICES

TEAM  
KENTUCKY  
CABINET FOR HEALTH  
AND FAMILY SERVICES



# KY Medicaid Website Resources

<https://medicaidrenewals.ky.gov>



Monthly Forum Session Information

KY Reports

FAQs

Medicaid Member Information

Medicaid Provider Information

Communication Materials

## Kentucky Plans and Reports

Kentucky prioritizes transparency across all operations and progress related to renewals. The following materials include up-to-date information on renewals as they are reported to the Center for Medicare and Medicaid Services. Additional reports will be added to this section as they are available.

### Most Recent CMS Monthly Data Reports

[Kentucky Monthly Data Report - February 2025 Reporting Period - Updated](#)

- [February Data Demographic Report](#)

[Kentucky Monthly Data Report - June 2025 Reporting Period](#)

- [June Data Demographic Report](#)

### Past Monthly Reports

If you would like to review past plans, information, and reports from the public health emergency (PHE) unwinding, you can visit that website here: <https://medicaidunwinding.ky.gov>

## Communications Materials

If you should need any materials to share with your customers or partners, please feel free to leverage the following resources, developed and approved by Kentucky Medicaid.

[Child Renewals Information Packet](#)

[Child Renewals Materials – Renew Coverage](#)

[Child Renewals Materials – Sign Up on kynect](#)

[Child Renewals Materials – Get Help](#)

[Child Renewals Materials – Alternative Options](#)

[KHCIP Enrollment](#)

[Get Ready to Renew!](#)

[Find Your Local DCBS Office!](#)

[kynectors Can Help!](#)

[How Do I Apply for Medicaid?](#)

[kynect Qualified Health Plan \(QHP\)](#)

## Medicaid Monthly Virtual Forums

To help support Medicaid partners, DMS holds virtual Medicaid Forums. These monthly meetings to provide information about Medicaid renewals and other program updates. You can find the materials from those sessions here:

### June Virtual Forum Recording



[June Presentation Slides](#)





## Questions

# Open call for topics of interest!

What would you like to hear more about  
from the Cabinet?

