

Insight Newsletter

Important Bi-Weekly Updates for
kynectors during Special Enrollment



Brought to you by



Issue #3
March 11, 2021



Social Media Sharing

KEY DATES

Special Enrollment End Date
May 15, 2021

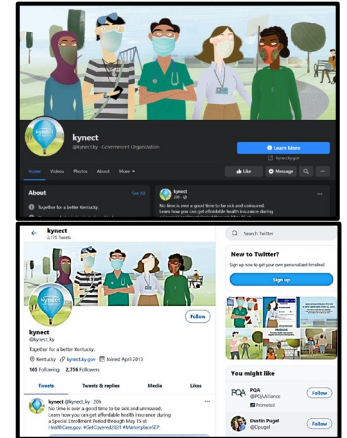
**Planned HealthCare.gov
Maintenance Schedule**
Saturday, March 13 - Sunday,
March 14, 2021
(10:30pm until 11:00am EST)

Sunday, March 28, 2021
(12:00am-7:00am EST)

Share SEP Social Media Posts!

There are several social media posts planned in support of the Special Enrollment Period (SEP) on the kynect Facebook and Twitter accounts during March and April.

We encourage you to re-share these posts to help make more Kentuckians aware of this additional opportunity to get covered. kynector organizations can also re-share CMS SEP Facebook and Twitter posts as they become available. **Please remember not to screenshot or download kynect images in order to create your own social media posts.**



Special Enrollment Period Rates

HealthCare.gov individual plan rates are set annually for the **full** plan year, so the rates available during the SEP are the **same** as the plan rates that were offered during the last Open Enrollment Period. However, if a Resident has had a birthday since Open Enrollment and enrolls in a **new** policy, their premium may reflect their older age.

HELPDESK NUMBERS

Professional Service Line
(855) 326-4650

**Department for
Medicaid Services**
(855) 446-1245

Call Center (Public)
(855) 459-6328

**Self Service Portal (SSP)
Helpdesk**
(844) 407-8398

**Federal Health Insurance
Marketplace (FFM)**
(800) 318-2596
Passcode: 502-999-9999

KHBE Email
KHBE.Program@ky.gov



Did You Know?

Currently, **9 out of 10 consumers** enrolled in a plan through HealthCare.gov receive some financial assistance. **All** of the plans available at HealthCare.gov cover essential health benefits, such as primary care visits, and cover many additional preventative care services with **no out-of-pocket costs**.



Quality of life. For every Kentuckian.